



*The World Leader in Vibrating Wire Technology*

48 Spencer Street  
Lebanon, NH 03766, USA  
Tel: 603•448•1562  
Fax: 603•448•3216  
E-mail: [geokon@geokon.com](mailto:geokon@geokon.com)  
<http://www.geokon.com>

*Installation Manual*

# Model 6005

## Spiral Sensors

No part of this instruction manual may be reproduced, by any means, without the written consent of Geokon, Inc.

The information contained herein is believed to be accurate and reliable. However, Geokon, Inc. assumes no responsibility for errors, omissions or misinterpretation. The information herein is subject to change without notification.

Copyright © 2009 by Geokon, Inc.  
Revision Initial



## Warranty Statement

Geokon, Inc. warrants its products to be free of defects in materials and workmanship, under normal use and service for a period of 13 months from date of purchase. If the unit should malfunction, it must be returned to the factory for evaluation, freight prepaid. Upon examination by Geokon, if the unit is found to be defective, it will be repaired or replaced at no charge. However, the WARRANTY is VOID if the unit shows evidence of having been tampered with or shows evidence of being damaged as a result of excessive corrosion or current, heat, moisture or vibration, improper specification, misapplication, misuse or other operating conditions outside of Geokon's control. Components which wear or which are damaged by misuse are not warranted. This includes fuses and batteries.

Geokon manufactures scientific instruments whose misuse is potentially dangerous. The instruments are intended to be installed and used only by qualified personnel. There are no warranties except as stated herein. There are no other warranties, expressed or implied, including but not limited to the implied warranties of merchantability and of fitness for a particular purpose. Geokon, Inc. is not responsible for any damages or losses caused to other equipment, whether direct, indirect, incidental, special or consequential which the purchaser may experience as a result of the installation or use of the product. The buyer's sole remedy for any breach of this agreement by Geokon, Inc. or any breach of any warranty by Geokon, Inc. shall not exceed the purchase price paid by the purchaser to Geokon, Inc. for the unit or units, or equipment directly affected by such breach. Under no circumstances will Geokon reimburse the claimant for loss incurred in removing and/or reinstalling equipment.

Every precaution for accuracy has been taken in the preparation of manuals and/or software, however, Geokon, Inc. neither assumes responsibility for any omissions or errors that may appear nor assumes liability for any damages or losses that result from the use of the products in accordance with the information contained in the manual or software.



# TABLE of CONTENTS

<b>1. INTRODUCTION .....</b>	<b>1</b>
2. SPIRAL SURVEY USING THE MECHANICAL SPIRAL SENSOR MODEL 6005-1 .....	1
3. SPIRAL SURVEY USING THE ELECTRONIC SPIRAL INDICATOR PROBE MODEL 6005-3 .....	2
<b>3.2.1 GK-603 Set-up.....</b>	<b>3</b>
<b>3.2.2 Preliminary Checks .....</b>	<b>3</b>
<b>3.2.3 Reading Procedure .....</b>	<b>3</b>

## LIST of FIGURES, TABLES and EQUATIONS

FIGURE 2. MODEL 6005-1 MECHANICAL SPIRAL INDICATOR .....	1
FIGURE # MODEL 6005-3 ELECTRONIC SPIRAL INDICATOR PROBE.....	2



## 1. Introduction

---

The Model 6500 Inclinometer Casing is used with the Model 6000 Inclinometer Probe. It has four grooves oriented @ 90 degrees designed to guide the wheels of the probe and keep them oriented in a known direction. The casing may become twisted during installation. This is more likely the longer the casing. In the following will be found descriptions of two kinds of spiral sensors, mechanical and electronic, and how they can be used to perform a spiral survey of the inclinometer casing grooves. The information from the spiral survey can be entered into spreadsheet software, so that directions of maximum tilt or inclination can be correctly oriented at any point along the casing.

## 2. Spiral survey using the mechanical spiral sensor Model 6005-1

The Model 6005-1 Spiral Sensor is shown in figure 2. It comprises a flat plate that is designed to fit in opposite grooves of 2.75" (Model 6500) Inclinometer Casing. To this flat plate are attached sectional orientation rods that enable the plate to be positioned at any depth within the casing. A pointer attached to the orientation rods is positioned over a protractor scale clamped to the top of the casing and reveals instantly the orientation of the casing grooves, at the position of the flat plate, relative to the grooves at the top of the casing. This amount of spiral is noted and entered into the appropriate software program.

A 1/16th" braided, plastic coated aircraft cable, attached to the flat plate can be used to lower and raise the plate and orientation rods inside the casing.

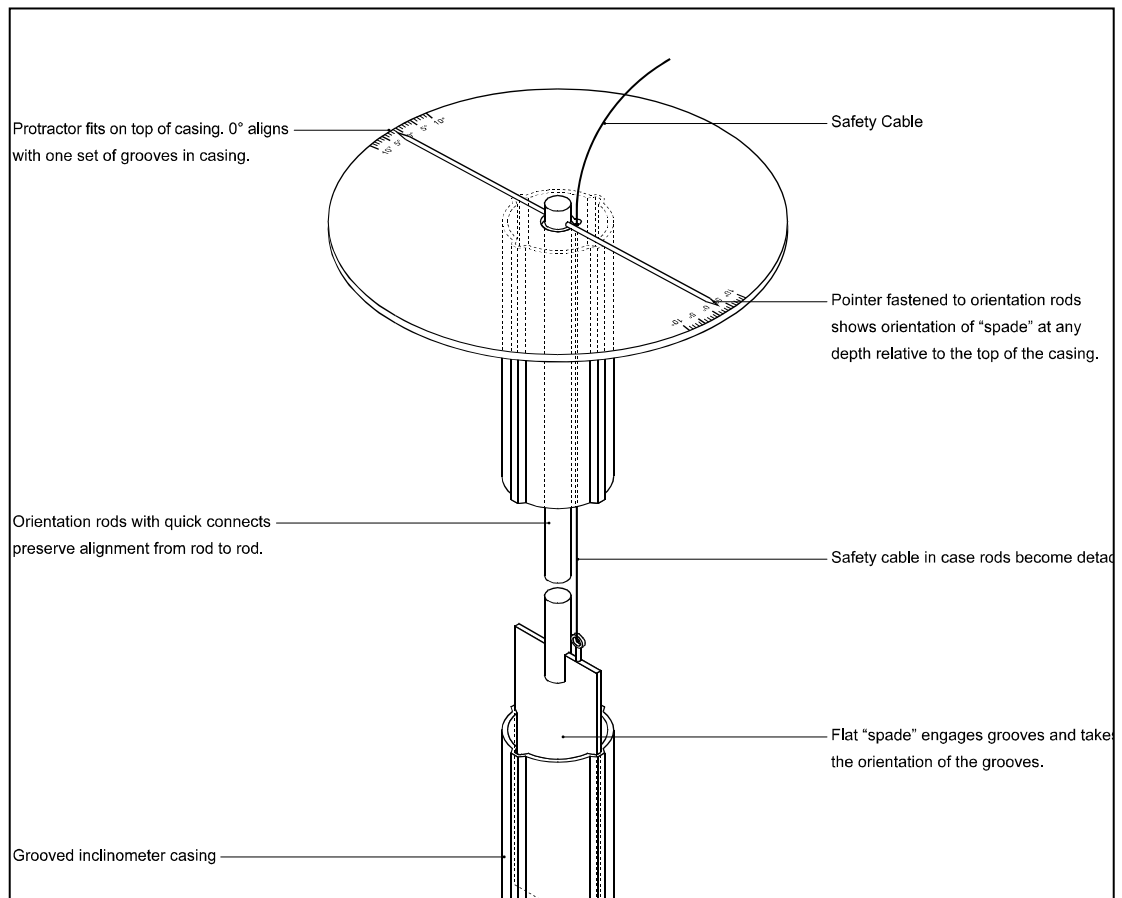
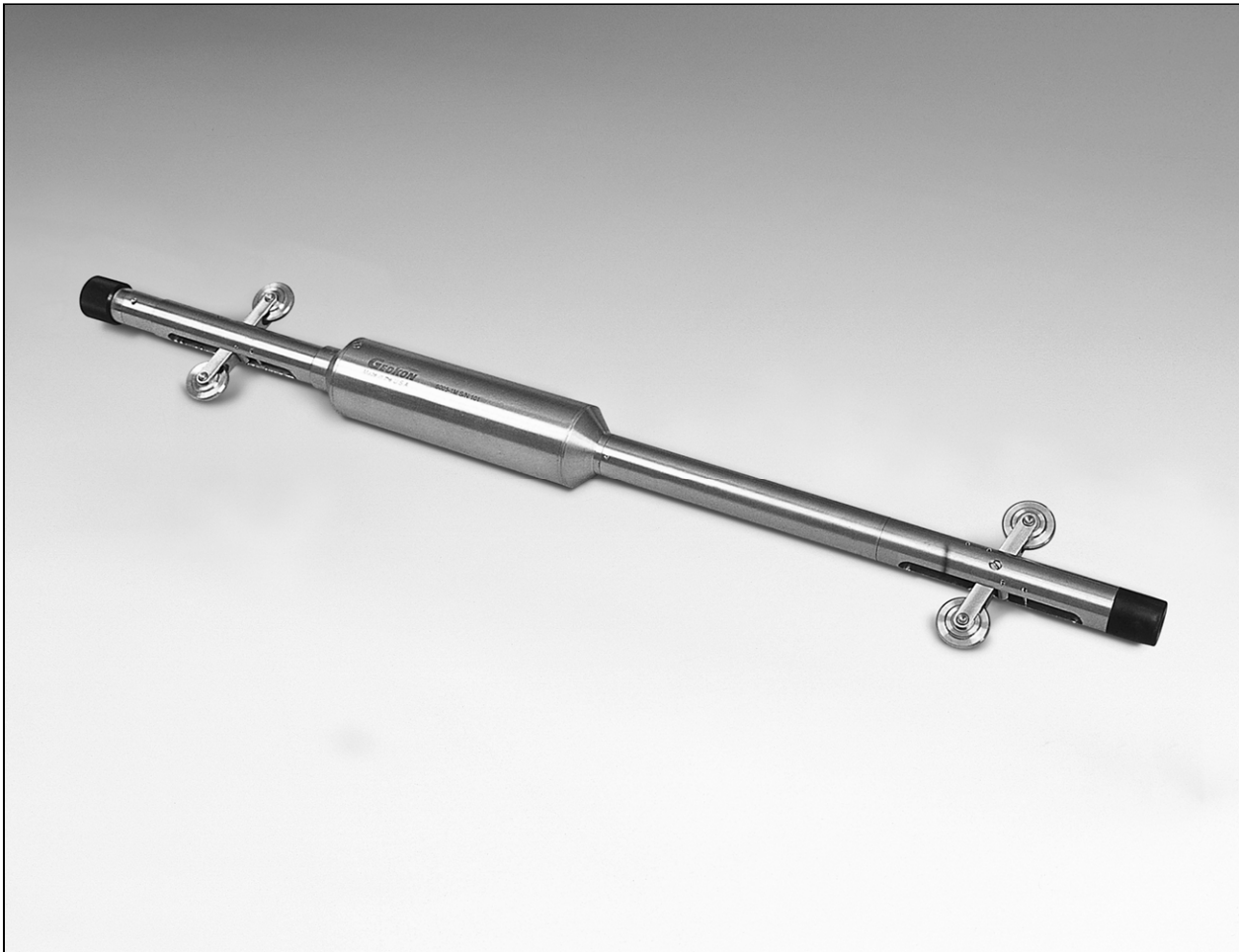


Figure 2 Mechanical Spiral Indicator

### 3. Spiral survey using the electronic spiral indicator probe Model 6005-3

The Model 6005-3 Spiral Indicator, shown in figure 3, is designed to be used in conjunction with the standard inclinometer cable (Model 6000-4) and with the Model GK-603 Inclinometer Readout Box.

The probe is lowered down the casing on the cable with the upper-most wheel in the A+ groove and a reading is taken using the GK-603 Readout Box at measured intervals along the casing.



#### 3.1. Sensor details or Borehole requirements

The sensor contains a microprocessor controlled fluxgate compass with an accuracy of  $\pm 0.5^\circ$  over a tilt range of  $\pm 16^\circ$ . *Note that this Spiral Indicator will not work in a steel cased borehole nor in situations where steel is present in the form of I beams, rebar, angles and channels etc. and is at distances of less than about one foot from the Spiral Indicator (or farther where the amount of steel is greater, or is oriented in an unfavorable direction.)*



## **3.2 Readout Procedure**

### **3.2.1 GK-603 Set-up**

The GK-603 readout box is set-up as follows:

- From the main menu select Option 5 - System Settings
- Now select Option 4 - Configure Probe
- Now select Option 1 – Compass
- Now select Option 3 - A-Axis zero shift and set the reading to + 1000
  
- Now escape to the Reading Screen and continue your setup in the usual manner. The display in the Reading Screen for channels A and B now includes a decimal point. The normal range of display for A and B is 0.0 to +360.0, indicating degrees. The B channel reading is calculated by adding 90° to the A channel compass measurement.

### **3.2.2 Preliminary Checks**

With the probe connected to the GK-603, and held more or less vertical twist the probe through one full revolution. The reading on the A-axis should go from zero degrees to 360.0 degrees then back to zero. With long Inclinator cables there can be some voltage loss in the cable such that the maximum reading may be less than 360.0 degrees. If this occurs then a correction can be made using the A-axis Gage Factor option. Select this option. If, say, the maximum reading is only 350 degrees then toggle in an A-axis gage factor equal to 1.029 (360/350). Now recheck the probe output and verify that the reading varies between 0 and 360 degrees.

### **3.2.3 Reading Procedure**

Now return to the 'Take Readings' screen and take readings at 0.5m (2 feet) intervals beginning at the bottom of the casing (or at the top if preferred). Store all readings in memory.

## **3.4. Analysis of the data**

Data stored in memory may be transmitted to a computer following the instructions of the GK-603 manual. Analysis of the data may be performed using spreadsheet programs to produce a plot showing the A groove orientation with depth. Depending on the magnitude of the twist the operator must then decide whether a correction is needed to the measured borehole deflections. Spirals less than 5 degrees may safely be ignored. Even 10-degree spirals have little significance.